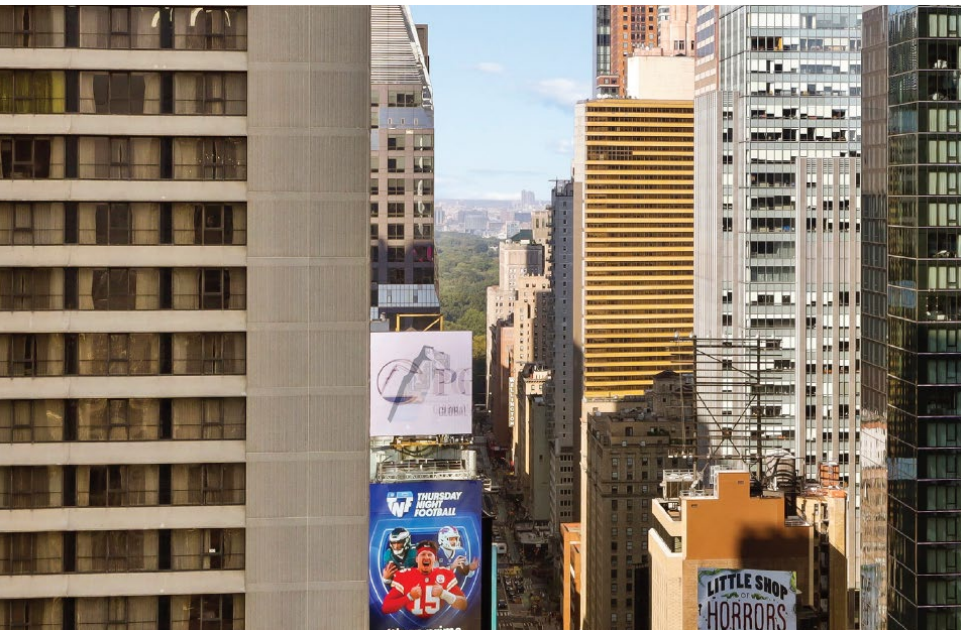


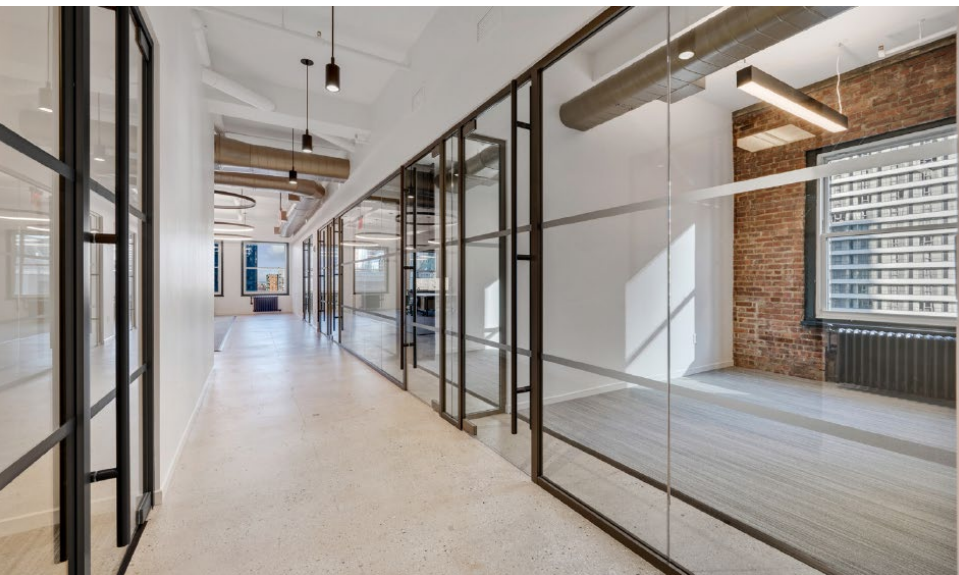


TURNKEY SUITES AT 1501 BROADWAY

ENTIRE 3rd FLOOR	PARTIAL 5th FLOOR	PARTIAL 10th FLOOR	PARTIAL 11th FLOOR
10,000 – 40,000 RSF			

NEWMARK





FLOOR PLAN Entire 3rd Floor | 41,105 RSF

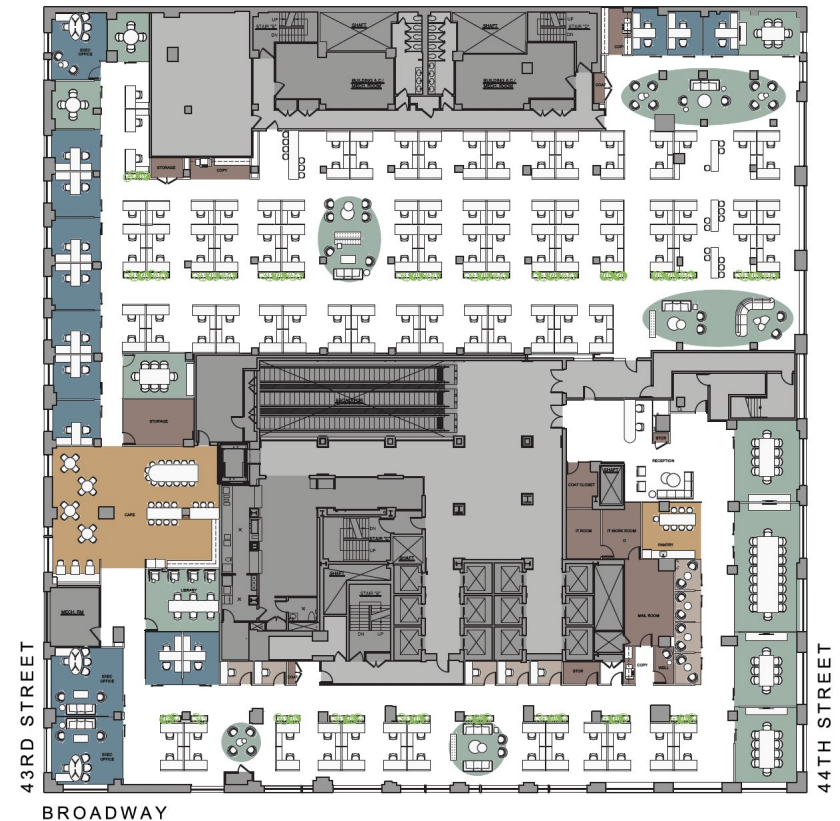
1501 BROADWAY

- Ability to create building within a building opportunity, with private entrance off of sky lobby
- Full & Partial Floor Opportunity (7,500 – 40,000 RSF)
- Sweeping views and light
- New Oversized Windows

BUILDING FEATURES

- The NEW 1501 Broadway
- Brand new lobby – relocated from Broadway to 43rd Street
- Featuring MKDA designed progressive PREBUILTS & TURNKEY suites
- Facial Recognition at turnstiles
- Robust enhanced cleaning for health and safety
- New escalator leading to elevator landing and new elevators
- Macchiato Espresso and Wine Bar and Lounge (Tenant-only amenity)
- Brooklyn Deli, now open!

WORKSPACE	SEATS
EXECUTIVE OFFICE	3
PRIVATE OFFICE	12
WORKSTATION (6'X6')	132
RECEPTION	1
TOTAL HEADCOUNT	148
COLLABORATIVE SPACE	
CONFERENCE ROOM	6
MEETING ROOM	2
OPEN LOUNGE	5
LIBRARY	1
SUPPORT	
CAFE	1
PANTRY	1
PHONE ROOM	9
COAT CLOSET	3
COPY AREA	3
STORAGE ROOM	4
IT ROOM	1
IT WORK ROOM	1
WELLNESS ROOM	1
MAIL ROOM	1

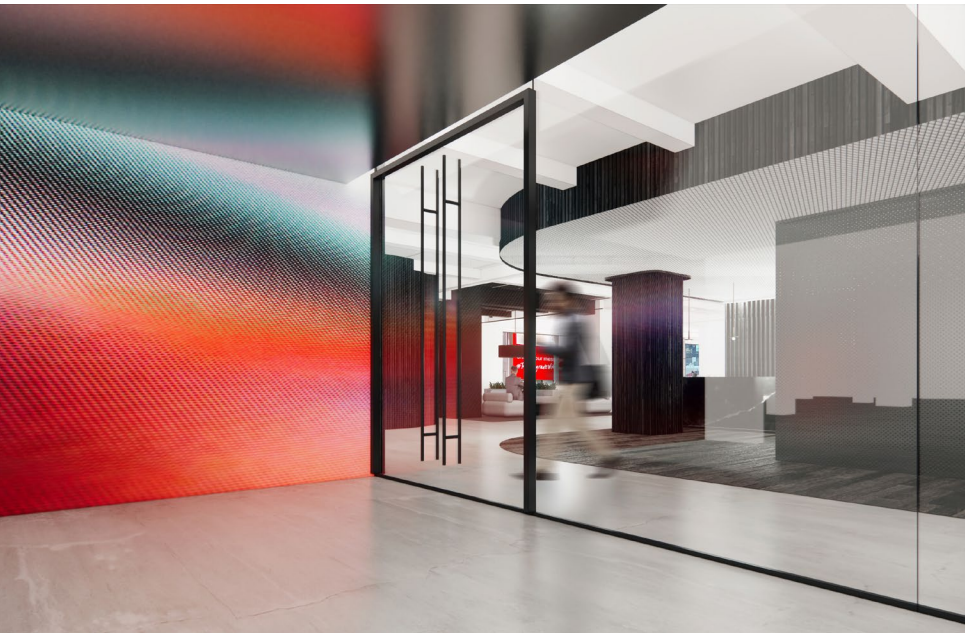


Sky Lobby Entrance



3rd Floor Renderings

1501 BROADWAY



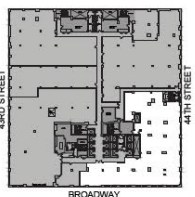
FLOOR PLAN Partial 5th Floor | Suite 501-505 | 11,578 RSF

1501 BROADWAY



5th Floor
Turnkey Suites
 9K RSF
 11K RSF

Upgraded Corridor



5TH FLOOR SUITE 501-505 | 11,578 RSF

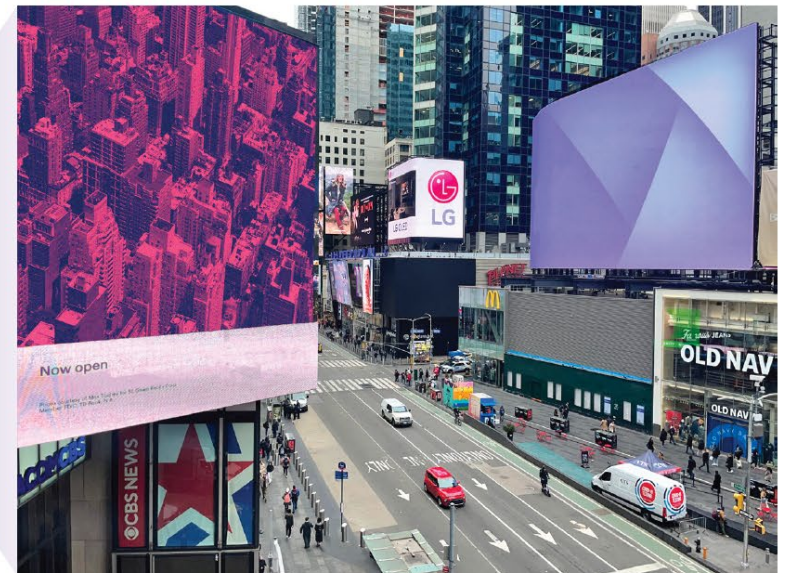
WORKSPACE	SEATS
EXECUTIVE OFFICE	1
PRIVATE OFFICE	5
WORKSTATION (6'X6')	41
HOTELING	3
RECEPTION	1
TOTAL HEADCOUNT	50

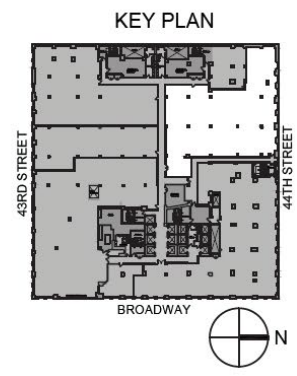
COLLABORATIVE SPACE

CONFERENCE ROOM	2
MEETING ROOM	1

SUPPORT

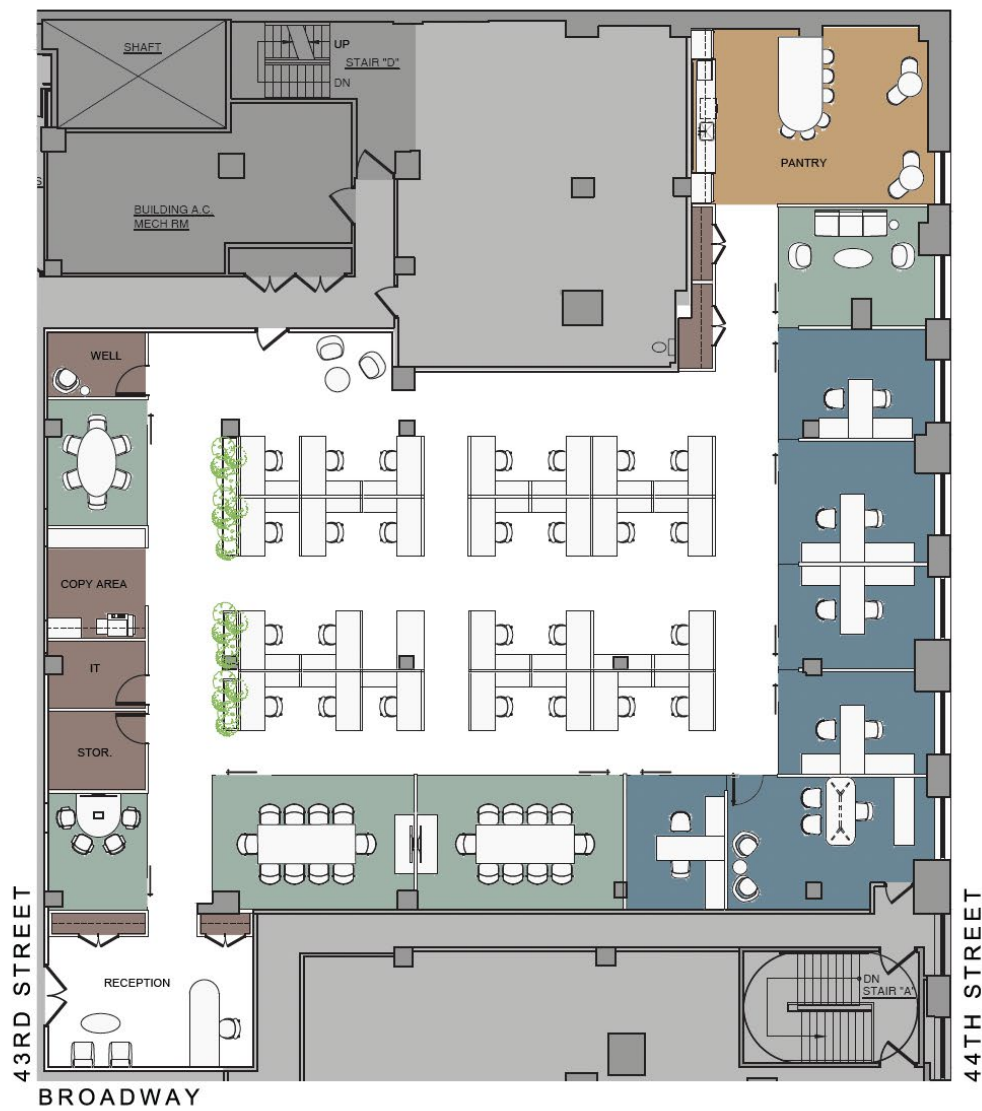
PANTRY	1
COAT CLOSET	1
COPY AREA	1
STORAGE ROOM	2
IT ROOM	1
WELLNESS ROOM	4





5TH FLOOR
SUITE 515 | 9,851 RSF

WORKSPACE	SEATS
EXECUTIVE OFFICE	1
PRIVATE OFFICE	5
WORKSTATION (6'x6')	26
RECEPTION	1
TOTAL HEADCOUNT	33
COLLABORATIVE SPACE	
CONFERENCE ROOM	2
MEETING ROOM	3
SUPPORT	
PANTRY	1
COAT CLOSET	4
COPY AREA	1
STORAGE ROOM	1
IT ROOM	1
WELLNESS ROOM	1



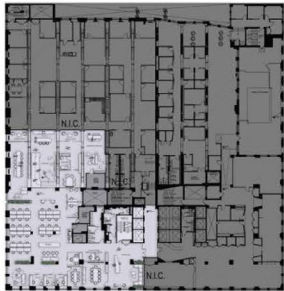
FLOOR PLAN

Partial 10th Floor | Suite 1001 | **13,193 RSF**

1501 BROADWAY



**CONCEPTUAL RENDERING
TRUSS INFRASTRUCTURE**



KEY PLAN



NORTH

SPACE TYPE	COUNT
Private Offices	05
Open Workstations	28
TOTAL WORK SEATS	33
Open Work Table (seats)	18
Large Conference Room	02
Medium Conference Room	02
Huddle Room	01
Phone Room	02
Open Collaborative (seats)	28
Reception	01
Pantry	01
Wellness Room	01
Copy/Print	01

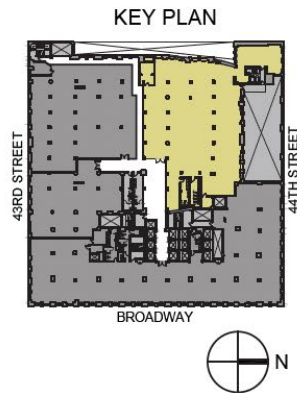




FLOOR PLAN

Partial 11th Floor | Suite 1103 | **14,100 RSF**

1501 BROADWAY

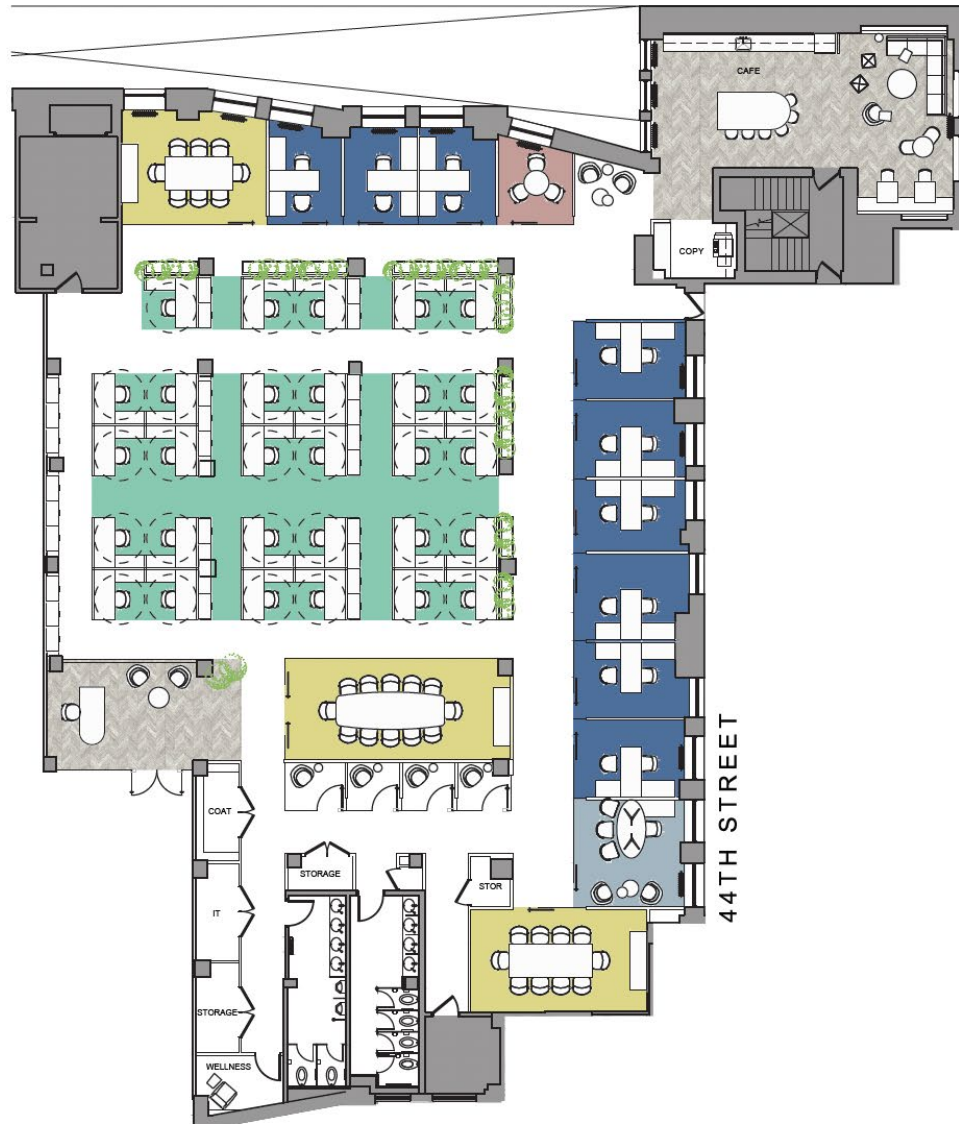


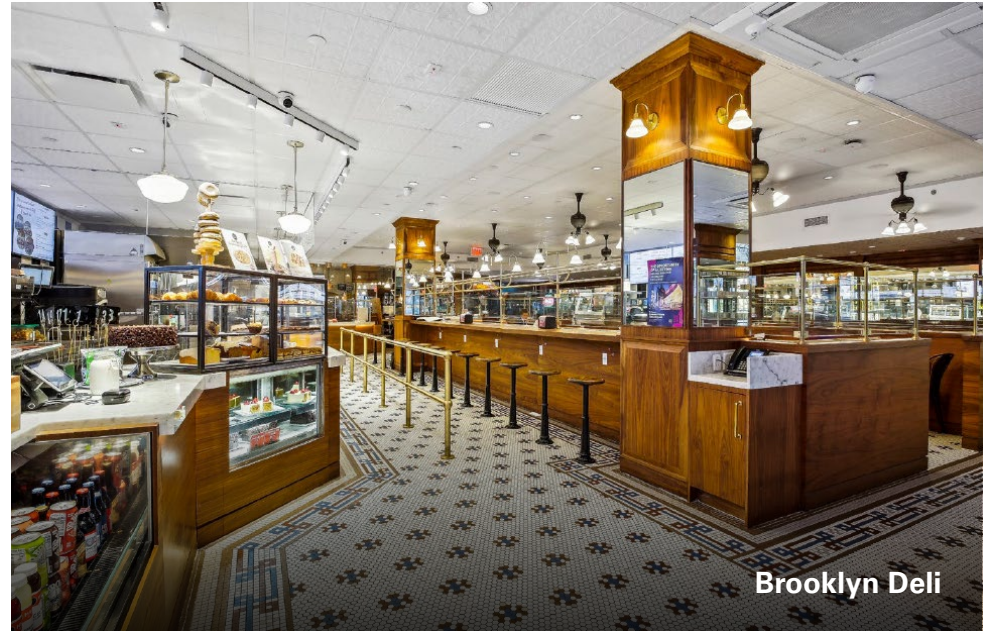
LEGEND

WORKSPACE	SEATS
EXECUTIVE OFFICE	1
PRIVATE OFFICE	9
WORKSTATION (6'x6')	29
RECEPTION	1
TOTAL HEADCOUNT	40

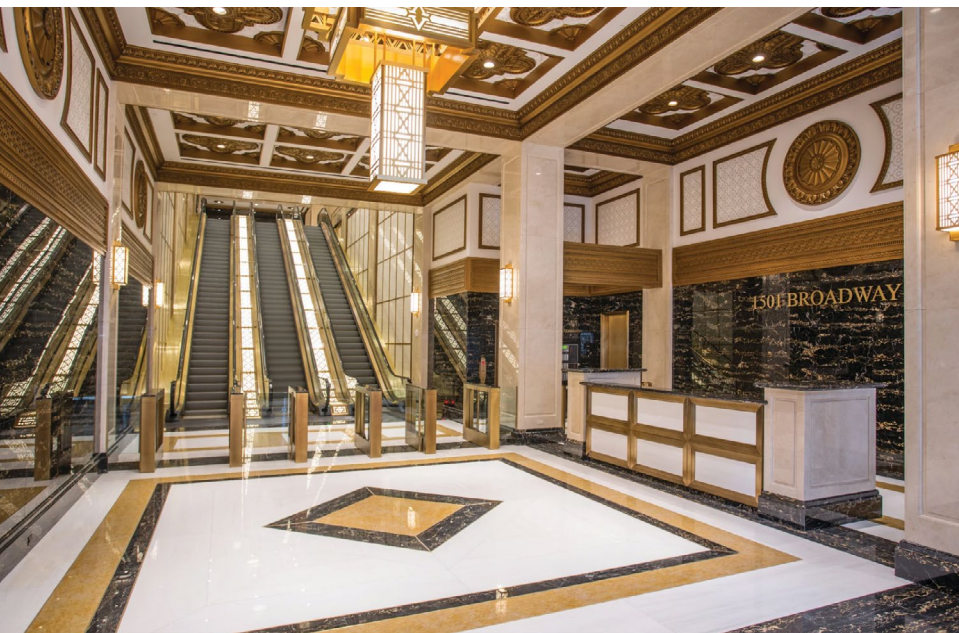
COLLABORATIVE SPACE	
CONFERENCE ROOM	3
MEETING ROOM	1

SUPPORT	
PANTRY	1
PHONE ROOM	4
COAT CLOSET	1
COPY AREA	1
STORAGE	4
IT/STORAGE	1
WELLNESS ROOM	1





Brooklyn Deli



Tenant Espresso & Wine Bar

1501 BROADWAY

Stephen Gordon
t 212-372-2375
stephen.gordon@nmrk.com

Matthew Leon
t 212-372-2041
matt.leon@nmrk.com

Nathan Kropp
t 212-372-2056
nathan.kropp@nmrk.com

USA **BROOKLYN DELICATESSEN** HOT PASTRAMI
& CORNED BEEF



NEWMARK

Paramount
BUILDING