



# 40K RSF AT 1501 BROADWAY

UNPARALLELED TIMES SQUARE VIEWS

**NEWMARK**

ENTIRE <b>3rd</b> FLOOR	UP TO <b>40K</b>	DIRECT ACCESS FROM LOBBY
-------------------------------	---------------------	--------------------------------

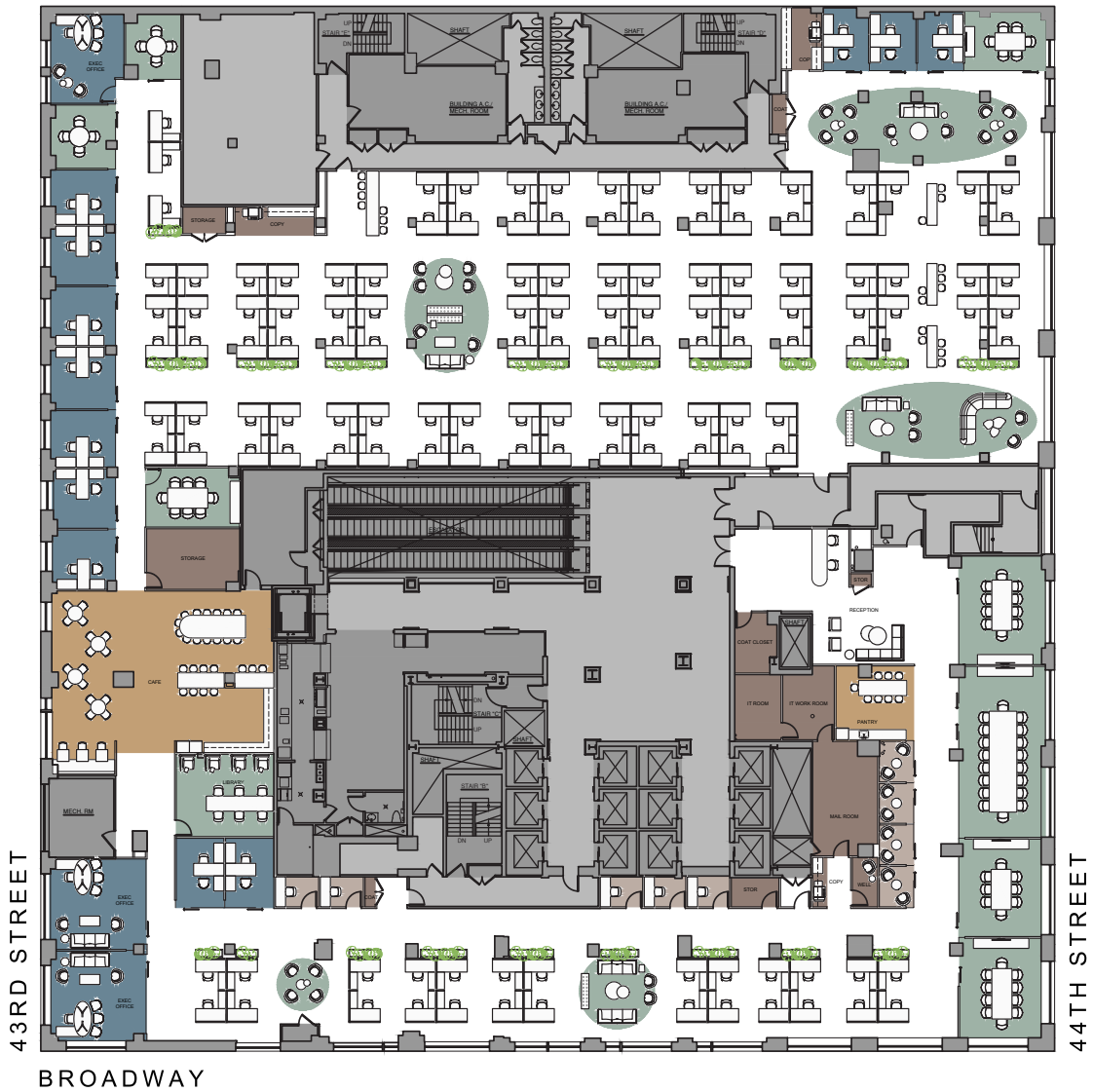
# FLOOR PLAN Entire 3rd Floor | 40,912 RSF

# 1501 BROADWAY

- Ability to create building within a building opportunity, with private entrance off of sky lobby
- Full & Partial Floor Opportunity (33,000-40,000 RSF)
- Unparalleled Views of Times Square
- Direct Double Door Access off Sky Lobby
- Potential Branding Opportunity
- Brand new giant windows
- Sweeping views and light
- Upgraded common corridors and restrooms

## BUILDING FEATURES

- The NEW 1501 Broadway
- Brand new lobby – relocated from Broadway to 43rd Street
- Featuring MKDA designed progressive PREBUILTS & TURNKEY suites
- Facial recognition and automatic temperature check at turnstiles
- Robust enhanced cleaning for health and safety
- New escalator leading to elevator landing and new elevators
- New windows throughout the building
- Macchiato Espresso and Wine Bar and Lounge (Tenant-only amenity)
- Brooklyn Deli, now Open!



### 3RD FLOOR FULL FLOOR | 40,912 RSF

WORKSPACE	SEATS
EXECUTIVE OFFICE	3
PRIVATE OFFICE	12
WORKSTATION (6'X6')	132
RECEPTION	1
<b>TOTAL HEADCOUNT</b>	<b>148</b>

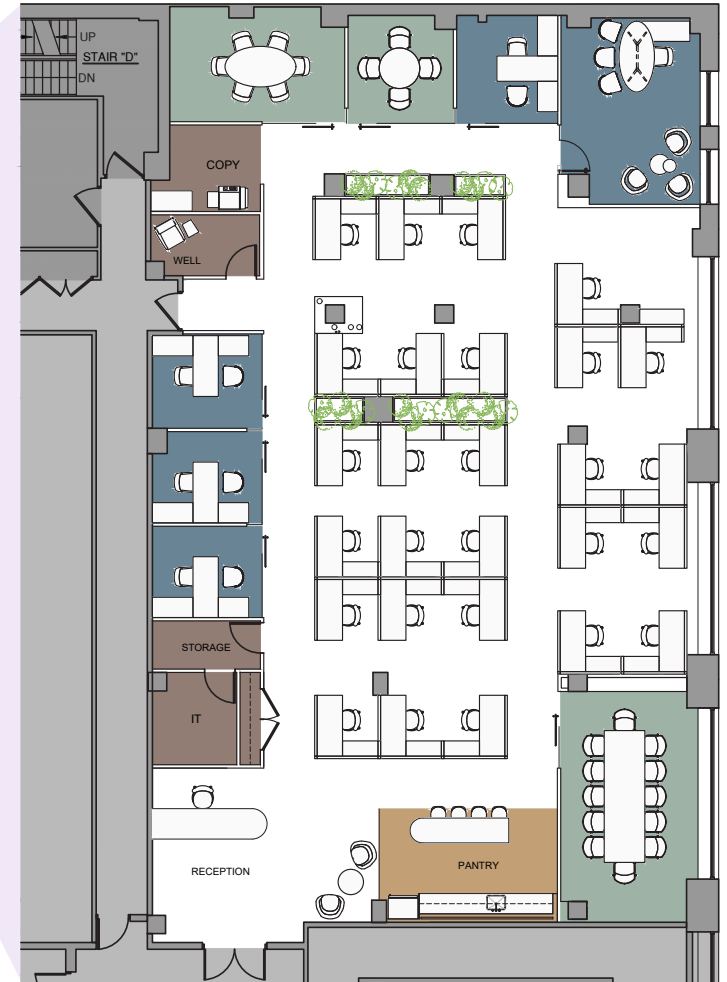
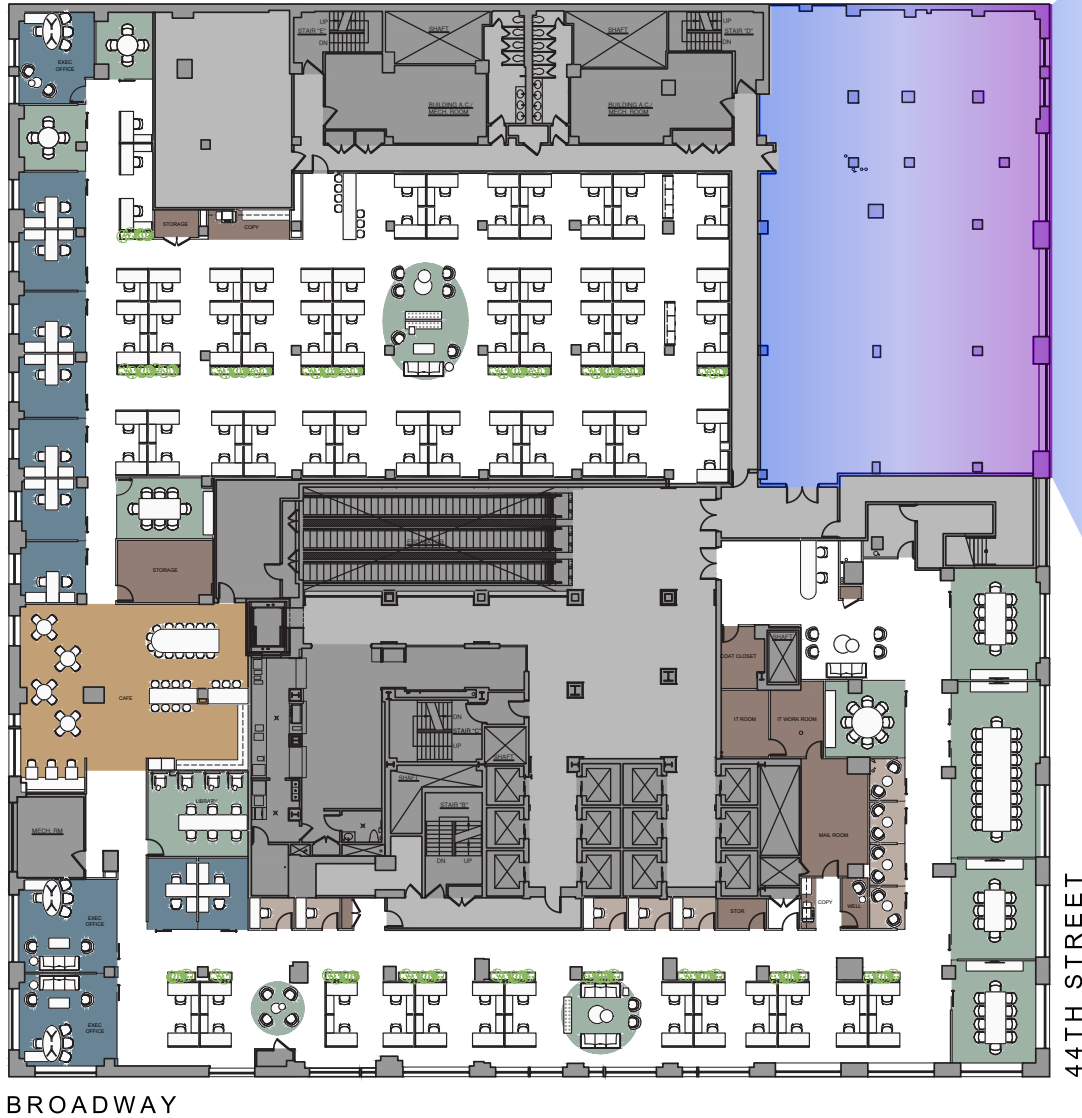
  

COLLABORATIVE SPACE	SEATS
CONFERENCE ROOM	6
MEETING ROOM	2
OPEN LOUNGE	5
LIBRARY	1

SUPPORT	SEATS
CAFE	1
PANTRY	1
PHONE ROOM	9
COAT CLOSET	3
COPY AREA	3
STORAGE ROOM	4
IT ROOM	1
IT WORK ROOM	1
WELLNESS ROOM	1
MAIL ROOM	1

Tenant A | 33,492 RSF



Tenant B | 7,420 RSF



3

Multi-Tenant Entrance from Building Lobby

1501 BROADWAY







# 1501 BROADWAY

**Stephen Gordon**  
t 212-372-2375  
stephen.gordon@nmrk.com

**Matthew Leon**  
t 212-372-2041  
matt.leon@nmrk.com

**Nathan Kropp**  
t 212-372-2056  
nathan.kropp@nmrk.com

ATMOSPHERE

USA **BROOKLYN DELICATESSEN** HOT PASTRAMI & CORNED BEEF



**NEWMARK**

*Paramount*  
BUILDING